



2025-2026

The Europe Race

Notice of Race

[Offshore E-Sailing Yacht Club](#)



Preamble

The Europe Race consists of a series of 90 or more races varying in length between 20 to 800 NM. Boats take part in a minimum of 7 races to reach a score. Boats are scored overall by their rating achieved in races from October 1st 2025 till September 30th 2026. Race results are by handicap where a corrected finish time determines position. For this all boat designs are assigned a Time Correction Factor

1. THE RACE

- 1.1. The Europe Race race series will be conducted using the virtual sailing game Sailaway in its latest installment
- 1.2. The Europe Race race series will start on October 4th 2025 with the warning signal of the first race at 17:00 UTC and start at 17:10 UTC



2. SCHEDULE

- 2.1. Regular races will be scheduled from Sept 1st 2025 til March. 31st 2026
Regular races are scheduled to start on Fridays, Saturdays and Sundays.
See appendix A for planned races
- 2.2. Fridays race will start 17:10 UTC
- 2.3. Saturdays race will start 13:10 UTC
- 2.4. Sundays race will start 13:10 UTC
- 2.5. There may be Coastal Short Races replacing any and all races
- 2.6. Any start of a race may be postponed to a start time later that same day, without further notice.
- 2.7. There may be more races than mentioned in NOR 2.2, 2.3 and 2.4 without further notice.
- 2.8. Races will be published in Sailaway more than 24 hrs before the preparatory signal.
- 2.9. Additionally race results of various races can be added to the rating for The Europe race.
 - 2.9.1. The Sailaway Sydney Hobart Race
 - 2.9.2. The Hague Iceland Back to Back 2026
 - 2.9.3. The Sailaway Newport Bermuda race 2026
 - 2.9.4. The Sailaway Admiral's Cup 2026
 - 2.9.5. The Sailaway Fastnet race 2026
 - 2.9.6. The Sailaway Northsea Regatta 2026

3. COURSE

- 3.1. The course for the The Europe Race races in general are from the start line in the starting city to the finish line at the finishing city. There are no further marks.
- 3.2. Courses will be published on Sailaway, however can be changed up to 1 hr before the start.
- 3.3. Boats are to join the race not sooner than 60 minutes before the start.
- 3.4. Boats may be ejected from the race or leg for the purpose of course changes by the Race Organizers up to 60 minutes before the start.
- 3.5. In deviating from 3.1 rounding marks, passing gates may be added to any course without further notice.
- 3.6. Appendix A gives a non inclusive list of races



4. AMENDMENTS

This Notice of Race can be amended. Amendments will be published on the Sailaway Discord server and/or the race website

5. REGISTRATION

- 5.1. A person in charge of the boat can register a boat for any race.
- 5.2. Race result is assigned to the participating boat, rank, rating, rating change and rating evaluation is assigned only to the person in charge.
- 5.3. A boat is sailed by a crew of one or more e-sailors. When sailing a race e-sailors can be part of only one crew on any particular boat.
- 5.4. A participating person in charge needs to have assigned an account in the e-offshore-racing.com ranking system.
- 5.5. E-sailors can claim their account by registration at <https://e-offshore-racing.com/randr/> Registration will be completed by entering the races in Sailaway no sooner than 60 minutes before the start..
- 5.6. By participating in a race and or registration the e-sailor accepts the Rules and Regulations that govern The Europe Race.
- 5.7. There is no registration fee.



6. RULES

- 6.1. Documents, or links to public locations of those documents, governing The Europe Race will be published on the Offshore E-Sailing Yacht Club Discord server and are available for download from The Europe Race website.
<https://e-offshore-racing.com/index.php/the-europe-race/>
- 6.2. The Europe Race is governed by the rules as defined in Sailing World Racing Rules of Sailing (RRS) and the Sailing Instructions (SI) for The Europe Race to be published no later than 14 days before the start of Leg1.
- 6.3. By participating in The Europe Race, e-sailors accept the rules and terms of the race as set out in this Notice of Race and set out in The Europe Race Sailing Instructions.
- 6.4. If an e-sailor behaves in a way that contradicts the rules and terms of engagement set out in this Notice of Race, or those set out in The Europe Race Sailing Instructions. The race committee has the right to remove the e-sailor.
- 6.5. Individual e-sailors are not allowed more than one profile to participate in the race and are not allowed to be registered as person in charge to The Europe Race more than once.



7. BOAT CLASS

- 7.1. The race is open to all boats for which a Time Correction Factor can be established.

8. BOAT DIVISIONS

- 8.1. There will be divisions separated by ranking of the person in charge such that latencies and disconnects to server overload are avoided
- 8.2. A division can have a maximum of 24 boats participating
- 8.3. When more boats are registered a division will be added
 - 8.3.1. The 24 lower ranked boats make up the first division
 - 8.3.2. Each consecutive group of lower ranked boat makes up the next division
 - 8.3.3. The last 24 or less remaining boats will make up the last division
 - 8.3.4. The last division is filled up by the respective highest ranked boat from the previous division till a minimum of 12 participating boats in that division is reached.
- 8.4. The Organizing Authority can reduce or expand the number of boats per division without further notice.

9. POINTS

- 9.1. Race results are determined by applying a Time Correction Factor based on the design's performance of all boats. Latest table published on The Europe Race website:
<https://e-offshore-racing.com/index.php/the-europe-race/>
- 9.2. Individual races are scored by low points.
- 9.3. The Europe Race is scored by rating, with a minimum of 7 results over all races.



10. ELIGIBILITY AND ENTRY

- 10.1. There is no age restriction on registering for the Europe Race. If an e-sailor under the age of 18 years old qualifies for prizes, any prizes must be accepted by a parent or legal guardian who must consent to the event rules and the acceptance of the prizes.

11. MEDIA RIGHTS

- 11.1. By participating in an event of The Europe Races, e-sailors automatically grant to the organizers, Sailaway developers Orbcreation b.v and their sponsors, the right in perpetuity to make, use and show, from time to time at their discretion, any live, taped or filmed reproductions, in game video streams, images and chat of and by the e-sailor during the period of The Europe Races, without compensation.



12. INFORMATION

- 12.1. Sailing Instructions (SI) for The Europe Race will present changes to the Sailing World Racing Rules of Sailing (RRS).
- 12.2. For technical queries about the Sailaway game, contact the Sailaway developers Orbcreation b.v at <https://sailaway.world/>
- 12.3. For other queries about The Europe Race, including feedback on the Racing Rules of Sailing, please contact The Europe Race organizer(s) through the [OEYC Discord server](#) or the race website. <https://e-offshore-racing.com/index.php/the-europe-race/>

13. CODE OF CONDUCT

- 13.1. e-sailors must conduct themselves in a reasonable manner, maintaining a friendly and polite demeanor to spectators, members of the press, other e-sailors, The Europe Race organizers, Sailaway developers Orbcreation b.v employees and World Sailing. All e-sailors are expected to adhere to the standards of good sportsmanship.
- 13.2. e-sailors and support persons shall comply with any reasonable request from the organizers and Sailaway developers Orbcreation b.v employees.
- 13.3. Race organizers may reduce or remove a prize in the case of misconduct or refusal to comply with any reasonable request.

14. LICENSE

- 14.1. This document is licensed under CC BY: This license allows reusers to distribute, remix, adapt, and build upon the material in any medium or format, so long as attribution is given to the creator. The license allows for commercial use.



15 CHANGES



Appendix A Races

Races:

Race Nr.	Course			Start
1	The Europe Race Genoa (ITA) - Monaco (MON) M			
2	The Europe Race Monaco (FRA) - Nice (FRA) M			
3	The Europe Race Nice (FRA) - Antibes (FRA) M			
4	Europe Race Antibes (FRA) - Saint Raphael (FRA) M			
5	Europe Race St. Raphael (FRA) - St. Tropez (FRA) M			
6	Europe Race St. Tropez (FRA) - Marseille (FRA) M			
7	Europe Race Marseille (FRA) - Sts Maries (FRA) M			
8	Europe Race Sts Maries (FRA) - Canet en R. (FRA) M			
9	Europe Race Canet en R. (FRA) - Palamos (ESP) M			
10	Europe Race Palamos (ESP) - Blanes (ESP) M			
11	Europe Race Blanes (ESP) - Barcelona (ESP) M			
12	Europe Race Barcelona (ESP) - Palma (ESP) M			



13	Europe Race Palma (ESP) - Ibiza (ESP) M			
14	Europe Race Ibiza (ESP) - Alicante (ESP) M			
15	Europe Race Alicante (ESP) - Lisbon (POR) M			
16	Europe Race Lisbon (POR) - Cascais (POR) M			
17	Europe Race Cascais (POR) - Porto (POR) M			
18	Europe Race Porto (POR) - Vigo (ESP) M			
19	Europe Race Vigo (ESP) - A Coruna (ESP) M			
20	Europe Race Lisbon (POR) - Cascais (POR) M			
21	Europe Race Cascais (POR) - Porto (POR) M			
22	Europe Race Porto (POR) - Vigo (ESP) M			
23	Europe Race Vigo (ESP) - A Coruna (ESP) M			
24	Europe Race A Coruna (ESP) - Santander (ESP) M			
25	Europe Race Santander (ESP) - Lorient (FRA) A			
26	The Europe Race Galway (IRL) - Dublin (IRL) M			
27	The Europe Race Dublin (IRL) - Belfast (IRL) M			
28	The Europe Race Belfast (IRL) - Cardiff (GBR) M			



29	The Europe Race Cardiff(GBR)-Southampton (GBR) M			
30	The Europe Race Aberdeen(GBR) - Edinburgh(GBR) M			
31	The Europe Race Edinburgh(GBR) - Sunderland(GBR) M			
32	The Europe Race Sunderland(GBR) - Lowestoft(GBR) M			
33	Europe Race Lowestoft (GBR) - Southampton (GBR) M			
34	The Europe Race Helsinki (FIN) - Tallinn (EST) M			
35	The Europe Race Tallinn (EST) - Riga (LIT) M			
36	The Europe Race Riga (LAT) - Klaipėda (LIT) M			
37	The Europe Race Klaipėda (LIT) - Gdansk (POL) M			
38	The Europe Race Gdansk (POL) - Rostock (GER) M			
39	The Europe Race Rostock (GER) - Kiel (GER) M			
40	The Europe Race Kiel (GER) - Kopenhagen (DEN) M			
41	The Europe Race Kopenhagen (DEN) - Aarhus (DEN) M			
42	The Europe Race Aarhus (DEN) - Göteborg (SWE) M			
43	The Europe Race Göteborg (SWE) - Oslo (NOR) M			
44	The Europe Race Oslo (NOR) - Hamburg (GER) M			



45	The Europe Race Hamburg (GER) - Delfzijl (NED) M			
46	The Europe Race Delfzijl (NED)-Den Helder (NED) M			
47	The Europe Race Den Helder (NED)-The Hague (NED) M			
48	The Europe Race The Hague (NED)-Rotterdam(NED) M			
49	The Europe Race Rotterdam (NED) - Antwerp (BEL) M			
50	The Europe Race Antwerp (BEL) - Ostend (BEL) M			
51	The Europe Race Ostend (BEL) - Calais (FRA) M			
52	The Europe Race Calais(FRA) - Dunkerque(FRA) M			
53	The Europe Race Dunkerque (FRA) - Dieppe (FRA) M			
54	The Europe Race Dieppe (FRA) M - Le Havre (FRA) M			
55	The Europe Race Le Havre (FRA) - Brest (FRA) M			
56	The Europe Race Brest (FRA) - Lorient (FRA) M			
57	The Europe Race Odessa (UKR) - Constanta (ROU) M			
58	The Europe Race Constanta (ROU) - Varna (BUL) M			
59	The Europe Race Varna (BUL) - Istanbul (TUR) M			
60	The Europe Race Koper (SLO) - Rovinj (CRO) M			



61	The Europe Race Rovinj (CRO) - Venezia (ITA) M			
62	The Europe Race Venezia (ITA) - Neum (BOS) M			
63	The Europe Race Neum (BOS) - Bar (MNE) M			
64	The Europe Race Bar (MNE) - Durres (ALB) M			
65	The Europe Race Durres (ALB) - Athens (GRE) M			
66	The Europe Race Istanbul (TUR) - Athens (GRE) M			
67	The Europe Race Athens (GRE) - Valetta (MAL) M			

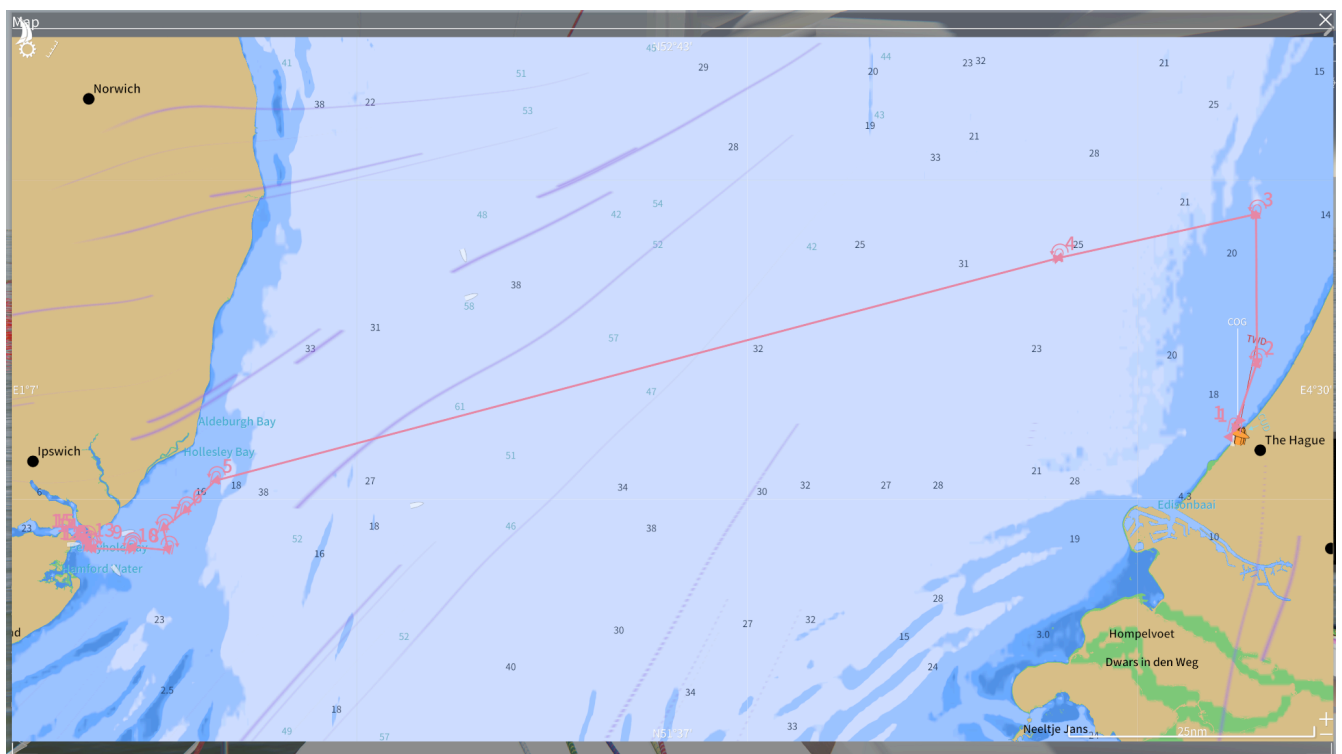


Appendix B

North Sea Regatta race courses

Vuurschepen Race

Tue 2026-05-12 18:00 UTC



Course

1 Start line	N52° 6.63' E4° 14.88'
2 Race mark port CCW	N52° 12.83' E4° 18.32'
3 Race mark port CCW	N52° 26.82' E4° 18.16'
4 Race mark port CCW	N52° 22.68' E3° 47.75'

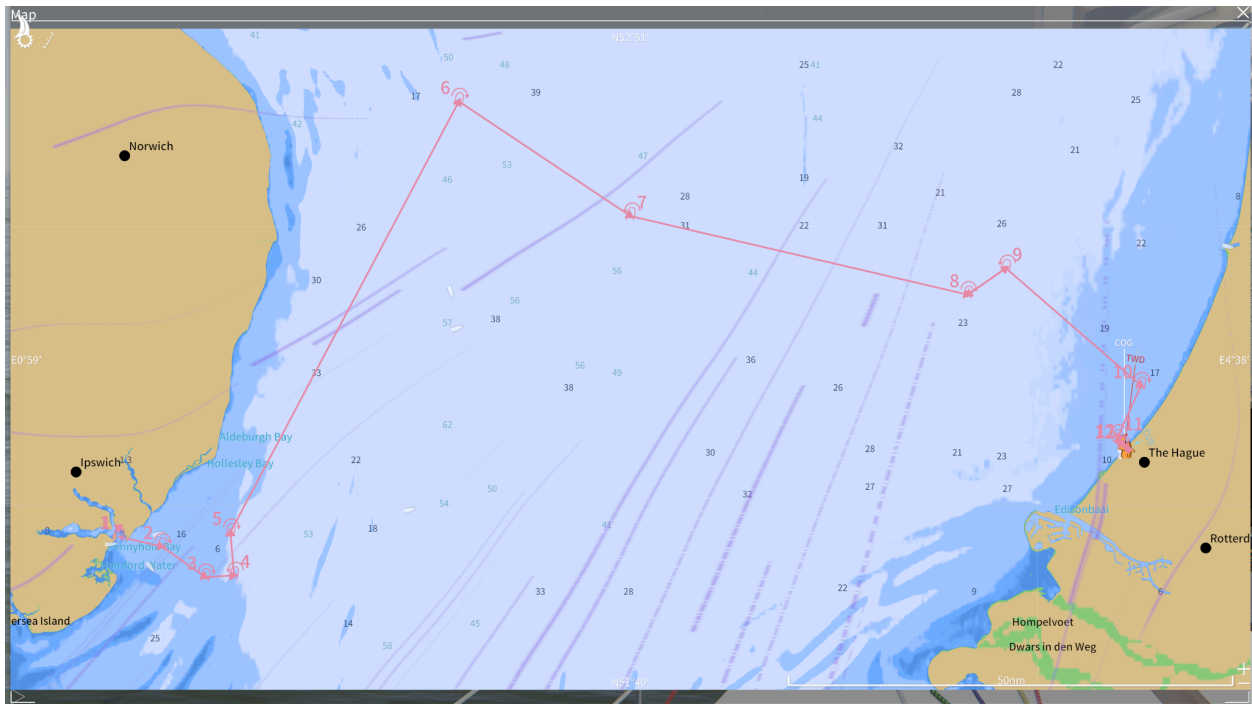


5 Race mark port CCW	N52° 1.73' E1° 38.23'
6 Race mark port CCW	N51° 58.88' E1° 33.62'
7 Race mark port CCW	N51° 57.23' E1° 30.25'
8 Race mark starboard CW	N51° 55.18' E1° 31.04'
9 Race mark starboard CW	N51° 55.51' E1° 25.43'
10 Race mark port CCW	N51° 55.22' E1° 25.21'
11 Race mark starboard CW	N51° 55.37' E1° 19.27'
12 Race mark starboard CW	N51° 55.44' E1° 18.84'
13 Race mark port CCW	N51° 55.71' E1° 18.54'
14 Race mark starboard CW	N51° 56.17' E1° 18.52'
15 Finish line	N51° 56.58' E1° 17.79'



North Sea Race

Fri 2026-05-15 12:40 UTC



Course

1 Start line	N51° 56.58' E1° 17.79'
2 Race mark starboard CW	N51° 55.52' E1° 25.42'
3 Race mark starboard CW	N51° 52.20' E1° 33.14'
4 Race mark port CCW	N51° 52.39' E1° 38.17'
5 Race mark starboard CW	N51° 57.05' E1° 37.55'
6 Race mark starboard CW	N52° 43.53' E2° 17.87'
7 Race mark port CCW	N52° 31.16' E2° 48.19'
8 Race mark starboard CW	N52° 22.68' E3° 47.73'
9 Race mark port CCW	N52° 25.54' E3° 54.44'
10 Race mark starboard CW	N52° 12.86' E4° 18.31'
11 Race mark port CCW	N52° 7.24' E4° 14.10'
12 Finish line	N52° 6.43' E4° 15.15'

